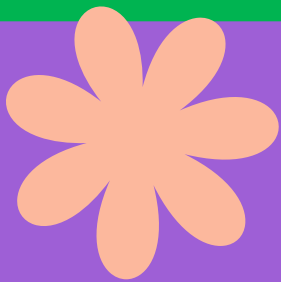




**Let's**

**Grow**

**Together!**



## **Let's Party!**

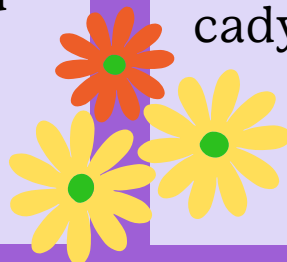
Your Community Engagement team will work with you from start to finish to host a recruitment event to remember!

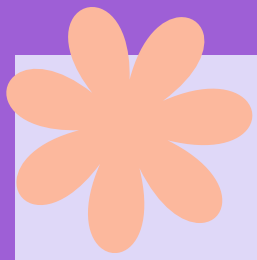
New to Girl Scouts or just need all the help you can get? We've got you! Experienced and ready rock? We can take a backseat role and handle behind-the-scenes tasks to ease your workload.

## **Ready to grow your troop?**

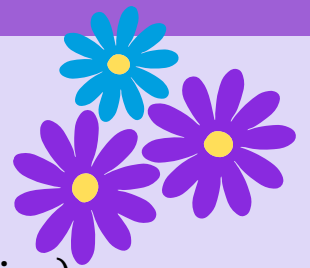
Connect with  
Jess Cady-Bartholomew,  
Director of Community  
Engagement at  
Badgerland, to learn  
more!

[cadyj@gsbadgerland.org](mailto:cadyj@gsbadgerland.org)  
608-237-1150





# Grow with Girl Scouts!



## Your Spring Party includes

- A custom flyer for your event (digital and/or hard copies)
- Event promotion in your community
- All supplies for a "create/take home flower pot" project + other fun stations that show what Girl Scouts is all about.
- "My Year of" patch
- An assortment of goodies (stickers, pencils, hair ties, etc)
- An extra set of hands! One of our friendly Community Engagement team members will be on hand to help set up, tear down and manage registration...while you and your troop focus on the fun!

## Join at the party incentive!

New Girl Scouts who sign up for extended year membership at the event and receive their sash (or tunic for Daisies) included in the cost April 1 - June 30

## What we need from you!

- Schedule a phone call to get organized.
- A few emails before the event to make sure we're on track.
- Promote the event in your network.
- At the event, we'll need a few current Girl Scouts who can put their leadership skills to work and a few adult members to help keep the party running smoothly and share their stories with potential new leaders.
- Any other ideas you have for additional stations or activities to show off what your troop is all about

**Spring Party**

**April- May**



**girl scouts**   
of wisconsin  
badgerland