



Rooted in  
Camp  
Tradition



girl scouts   
of wisconsin  
badgerland

## Badgerland Camps

*Celebrating 75 years of camp!*

June–August 2026



# Camp Memories Last a Lifetime

Get ready for an unforgettable camp season! Whether this is your Girl Scout's very first camp adventure or a treasured summer tradition, we're so excited to welcome them to a season filled with exploration, growth, and plenty of fun.

At camp, Girl Scouts dive into experiences that inspire independence, spark curiosity, and build confidence. From learning new skills to exploring the outdoors with friends, every activity is a step toward discovering their strengths. Whether it's paddling across a shimmering lake, taking aim at the archery range, hiking through scenic trails, or relaxing by a glowing campfire, each day is packed with chances to stretch, grow, and shine.

And this year, there's even more to discover! We've added brand-new high and low ropes courses—giving campers thrilling new challenges that build trust, teamwork, and confidence as they reach new heights and support one another along the way.

But camp is more than just fun—it's truly life-changing. Research from the Girl Scout Research Institute shows the powerful impact of time spent outdoors: 80% of Girl Scouts who started the season needing to build outdoor skills showed real progress in just one summer. From overcoming fears to leading their peers, campers grow in confidence and resilience with every experience. And we see that transformation happen—every single session.

Our amazing camp staff are here to make sure every Girl Scout feels safe, included, and celebrated for exactly who they are. When you pick up your camper at the end of the week, you'll see the difference: a Girl Scout who's braver, more confident, and ready to take on what's next.

This summer, send your Girl Scout on a journey of discovery—where they'll laugh, learn, and grow in all the best ways. Together, we're building the leaders of tomorrow, one adventure at a time.

Happy Camping, Girl Scouts! — Lisa Smith



A stylized, handwritten signature of Lisa Smith in black ink.

Lisa Smith

CEO, Girl Scouts of WI - Badgerland

## Land Acknowledgment:

The Girl Scouts of Wisconsin-Badgerland honor the special connection between the land and Indigenous peoples. A land acknowledgment is a way of showing respect to the original people who have lived on and cared for this land for thousands of years. We recognize that our camps and communities are located on the ancestral lands of the Fox, Ho-Chunk, Kickapoo, Myaamia, Peoria, Sauk, and other Indigenous nations and tribes.

Acknowledging the land is important because it helps us remember the history, culture, and contributions of these nations and show respect for Indigenous communities, including our First Nation and Indigenous Girl Scouts, volunteers, families, and communities. At camp, Girl Scouts will have a chance to learn more about Indigenous history and traditions through activities and stories, deepening our understanding and appreciation for the land we share.

If you want to learn more, we encourage you to ask questions, read books about Indigenous history and culture, and attend local events. Showing respect and learning from others are important parts of being a Girl Scout!

## Get Ready for a Nostalgic Girl Scout Summer

**REGISTRATION OPENS  
THURSDAY, JANUARY 15  
at NOON.**

Discounted Pricing on Camp Ehawee  
Overnight Programs January 15–31.

## Brand new this year at Camp Ehawee

Low and high ropes courses! Test your bravery and soar with us this summer.



## Table of Contents

Camp Ehawee 75th .....	4-5
Badgerland Camps .....	6-7
All Summer Camps .....	8-9
Plan Your Camp Journey.....	10-11
New High Ropes Course .....	12-13
Day Camp .....	14
My Grown-Up & I Camp.....	15
Mini Resident Camp.....	16
Resident & Horse Camp .....	17
High Adventure Camps .....	18-19
Teen Programming .....	20
Leadership Camps .....	21
CampHERO & CampBUILD .....	22-23
Camp Registration & Info .....	24-27
Brandenburg Camp Rentals.....	28-29
More Summer Activities.....	30-31





# Celebrating 75 Years of Camp



## 75 Years of Adventure—and You're Next!

For over 75 years, Girl Scouts have explored these same trails, tossed their first hatchet, and made lifelong friends at Camp Ehawee. Now it's your turn to join the tradition! Whether it's the excitement of your first round of Freezing Frogs at Camp Ehawee, the wonder of exploring birds and bugs at Camp Brandenburg, or the thrill of water or trail exploring, each summer adventure is designed to ignite your curiosity.

Every experience is crafted to bring out your Girl Scout *'I've got this!'* spirit. These activities are here to boost your confidence, helping you reach for the stars, and make new memories that will last a lifetime! So, step outside, Girl Scout, and discover the magic that generations of Girl Scouts have cherished for over 75 years.

### Celebrate with us at Camp Ehawee

We are so excited to welcome you to camp to celebrate together. Save the following dates, and keep a look out for more information coming soon.

**Camp Ehawee 75th Open House: May 9, 2026**

**VIP Camp Day for Early Renewed Girl Scouts: August 15, 2026**

**Girl Scout Alumni Day at Camp Ehawee: October 10, 2026**





# Camp Ehawee Merch

## Inspired By the History of Camp!

Join us in celebrating this exciting milestone with a brand new collection of Camp Ehawee merch. From pennant flags to apparel, this collection is inspired by items that campers have cherished in years past. Shop online at [shopgsbadgerland.org](http://shopgsbadgerland.org).

### A Sneak Peek at Designs



\*style and color may vary

Supplies will be limited. Stay tuned for more details on how to purchase your Camp Ehawee collectors items.

## Don't Miss Out!

Learn more and stay up-to-date with all the 75th anniversary fun through our website.





## Camp Ehawee | La Crosse County

Nestled in the stunning hills of La Crosse County, Camp Ehawee (pronounced e-HOW-e) is all about inspiring campers to build independence, boost confidence, and spark curiosity. Whether it's your first time or you're a seasoned camper, Ehawee offers endless opportunities to try new things, make lifelong friends, and explore the beauty of the outdoors. And with accreditation from the American Camp Association (ACA), you can feel confident knowing our commitment to health, safety, and fun is top-notch.

### Features of Camp



**Waterfront:** Swim in the pool and canoe through the serene Slough.



**Aerial Sports:** Test your bravery and team building with the *brand new* high and low ropes courses! Complete with ziplining, a climbing wall, and so much more.



**Target Sports:** Practice archery, hatchet throwing, and slingshots in our newly constructed Target Sports Pavilion—brand new this summer! Enjoy these activities in a safe, supportive environment designed for fun and skill-building.



**Outdoor Skills:** Go geocaching, explore nature trails, and cook over an open fire to build essential outdoor skills.



**Art Studio:** Get creative with pottery, candle-making, painting, and nature-inspired crafts.



**Field Sports:** Enjoy kickball, volleyball, gaga ball, and team-building games that foster cooperation and fun.



**STEM Adventures:** Explore ecosystems, sustainability, and nature through creek-hopping, hiking, gardening, and hands-on creativity.

### Where Campers Will Stay

Campers bunk together in cozy, comfortable lodging that creates a welcoming space after full days of outdoor adventure. Bunkmates bond over camp stories, songs, and late-night laughs, creating friendships and memories that last a lifetime.





## Camp Brandenburg | Dane County

Nestled on the shores of Brandenburg Lake, Camp Brandenburg offers the perfect blend of outdoor fun and cozy comfort. Located just 20 minutes from Madison, this camp is ideal for first-time campers, experienced Girl Scouts, and for troop and service unit reservations. Camp Brandenburg is filled with engaging activities to spark creativity, build friendships, and foster a lifelong love for nature.

### Features of Camp



**Waterfront:** Paddle across the lake in pedal boats or canoes, learning teamwork and water safety.



**Target Sports:** Enjoy slingshot practice and team-based paintball games that promote focus and fun.



**Crafting Corner:** Create friendship bracelets, vibrant tie-dye shirts, and unique SWAPS to trade with fellow campers.



**Outdoor Exploration:** Try geocaching, letterboxing, and nature hikes to learn about local flora and fauna, all enhanced by the interactive Nature Nook.

### Where Campers Will Stay

Brandenburg offers a range of accommodations, from the comfortable Hilltop Lodge, complete with bunkhouses, a kitchen, and modern bathrooms, to Beehive, ideal for first-time campers with bunk rooms, activity spaces, and a fire ring. For a rustic experience, Forest Glen features cabins, pit latrines, and meals cooked over an open fire. Wherever they stay, campers will find the perfect base for exploration and adventure!



#### Make it a troop camp!

Troops and service units are welcome to book Camp Brandenburg for overnight adventures year-round.

**D**

## Grades PreK-K

June & July	<b>Day Camp</b> June 22-26 (5 days) OR June 29-July 3 (5 days) OR July 6-10 (5 days) OR July 13-17 (5 days) OR July 20-24 (5 days)
July	<b>CampHERO Daisies</b> July 24 (1 day)
August	<b>CampBUILD Material Handler</b> August 8 (Morning) OR August 8 (Afternoon)



## PreK-Adult

May	<b>75th Celebration at Camp Ehawee</b> May 9 (1 day)
June & July	<b>My Grown Up &amp; I</b> June 19-21 (2 nights) OR July 24-26 (2 nights)

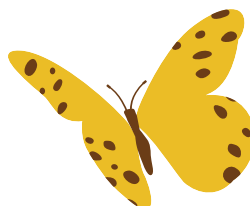
## Levels

- |                   |                      |
|-------------------|----------------------|
| <b>D</b> Daisies  | <b>C</b> Cadettes    |
| <b>B</b> Brownies | <b>S</b> Seniors     |
| <b>J</b> Juniors  | <b>A</b> Ambassadors |

**B**

## Grades 1-2

June & July	<b>Mini Resident Camp Brownies &amp; Juniors</b> June 14-16 (2 nights) OR June 17-19 (2 nights) OR June 21-23 (2 nights) OR June 24-26 (2 nights) OR June 28-30 (2 nights) OR July 8-10 (2 nights)
August	<b>Day Camp</b> June 22-26 (5 days) OR June 29-July 3 (5 days) OR July 6-10 (5 days) OR July 13-17 (5 days) OR July 20-24 (5 days)
	<b>CampBUILD Skilled Helper</b> August 4 (Morning) OR August 4 (Afternoon)
	<b>CampHERO Brownies</b> August 6 (1 day) OR August 7 (1 day)



**J**

## Grades 3-4

June & July	<b>Mini Resident Camp Brownies &amp; Juniors</b> June 14-16 (2 nights) OR June 17-19 (2 nights) OR June 21-23 (2 nights) OR June 24-26 (2 nights) OR June 28-30 (2 nights) OR July 8-10 (2 nights)
	<b>Horse Camp</b> June 14-19 (5 nights) OR June 21-26 (5 nights) OR June 28-July 3 (5 nights)
	<b>Day Camp</b> June 22-26 (5 days) OR June 29-July 3 (5 days) OR July 6-10 (5 days) OR July 13-17 (5 days) OR July 20-24 (5 days)
	<b>CampHERO Juniors</b> July 23 & 24 (2 days) OR July 30 & 31 (2 days)
July & August	<b>CampBUILD Pre-Apprentice</b> July 25 (1 Day) OR August 3 (1 day)
	<b>Resident Camp</b> July 12-17 (5 nights) OR July 19-24 (5 nights) OR July 26-31 (5 nights) OR August 2-7 (5 nights)



C

## Grades 5–7

June &amp; July

### Horse Camp

June 14–19 (5 nights)  
OR  
June 21–26 (5 nights)  
OR  
June 28–July 3 (5 nights)

July

### Water Explorer Camp

July 12–17 (5 nights)  
OR  
July 26–31 (5 nights)

### CampBUILD Apprentice

July 23 (1 Day)  
OR  
July 24 (1 day)

July &amp; August

### Trail Explorer Camp

July 19–24 (5 nights)  
OR  
August 2–7 (5 nights)

### CampHERO Cadettes

July 20–22 (2 nights)  
OR  
August 3–5 (3 days)

### Resident Camp

July 12–17 (5 nights)  
OR  
July 19–24 (5 nights)  
OR  
July 26–31 (5 nights)  
OR  
August 2–7 (5 nights)

S

## Grades 8–9

June &amp; July

### Horse Camp

June 14–19 (5 nights)  
OR  
June 21–26 (5 nights)  
OR  
June 28–July 3 (5 nights)

July

### Water Explorer Camp

July 12–17 (5 nights)  
OR  
July 26–31 (5 nights)

**CampHERO  
Seniors & Ambassadors**  
July 26–30 (4 nights)

**Leadership Camp  
Counselor-in-Training I**  
July 26–31 (5 nights)

July &amp; August

### Trail Explorer Camp

July 19–24 (5 nights)  
OR  
August 2–7 (5 nights)

### Resident Camp

July 12–17 (5 nights)  
OR  
July 19–24 (5 nights)  
OR  
July 26–31 (5 nights)  
OR  
August 2–7 (5 nights)

August

### CampBUILD Journeyworker

August 6–8 (3 days)

A

## Grades 10–12

June &amp; July

### Horse Camp

June 14–19 (5 nights)  
OR  
June 21–26 (5 nights)  
OR  
June 28–July 3 (5 nights)

July

### Water Explorer Camp

July 12–17 (5 nights)  
OR  
July 26–31 (5 nights)

**Leadership Camp  
Counselor-in-Training II  
Ehawe**  
July 12–24 (12 nights)

**CampHERO  
Seniors & Ambassadors**  
July 26–30 (4 nights)

July &amp; August

### Trail Explorer Camp

July 19–24 (5 nights)  
OR  
August 2–7 (5 nights)

### Resident Camp

July 12–17 (5 nights)  
OR  
July 19–24 (5 nights)  
OR  
July 26–31 (5 nights)  
OR  
August 2–7 (5 nights)

August

**CampBUILD  
Journeyworker**  
August 6–8 (3 days)

## Camp Locations

 Camp Ehawe

 Camp Brandenburg

 Madison College - CampHERO

 Madison College - CampBUILD

## Grade Level Note:

Camps are organized by the grade campers will complete in May/June of 2026. The curriculum, activities, and badges are based on the Girl Scout level the camper will be entering in the fall.

# Plan Your Camp Journey

## Leadership Camps

### 5+ overnights Become a camp leader

If you dream of becoming a camp counselor or growing as a leader, Leadership Camps are for you. Spend 5+ nights learning to lead younger campers, mastering camp skills, and gaining real-world experience. You'll grow your confidence, build lifelong friendships, and inspire others—while having tons of fun!

## High Adventure Camp

### 5 overnights Experience more of a challenge

Take your camping experience to the next level with High Adventure Camps. These 5 night sessions feature exciting, next-level challenges, like wilderness survival skills, extended canoe trips or hiking. Perfect for campers ready to push their boundaries and embrace adventure!

## Overnight Camp

### 5 overnights Classic camp experience

Spend 5 nights fully immersed in camp life. You'll make new friends, challenge yourself with activities like kayaking, outdoor cooking, and nature hikes, and create lifelong memories. Each day brings something new, and the evenings are full of magic with campfires, skits, and stargazing.

## Mini Overnight Camps

### 2 overnights Ease into overnight camping

Mini Camps are a great way to try staying overnight in a camp setting. You'll enjoy 2 nights of campfires, songs under the stars, and fun outdoor adventures, like hiking and swimming. It's a chance to build your confidence in a supportive and exciting environment!

## Day Camps

### No overnights Perfect for first-time campers

Day Camps are all about fun, discovery, and adventure—without any overnights. You'll spend your day exploring the outdoors, making crafts, playing games, and trying exciting activities like archery and canoeing. At the end of the day, you'll head home to rest up for the next day of fun!

Building up!

## What I want to do at camp:

CAMP  
GIRL  
SCOUTS

## Camps I want to go to:



# The Camp Difference

The data reveals why Girl Scout camp is so valuable to youth.

## Try Something New, Gain Confidence

According to 75% of campers, learning new skills was one of the best parts of their camp experience. From climbing to outdoor cooking, camp is the perfect place to grow and discover what you can achieve.



## Where Adventure Meets Friendship

Over 90% of campers made new friends while exploring the great outdoors. Camp is the place for connecting, sharing laughs, and building friendships that last.



## A Place for Every Interest

With activities ranging from archery and art to STEM and nature exploration, Girl Scout Camp has something for everyone. Dive in, find your passion, and try something new.



## Get Ready for a Thrill

Outdoor high adventure activities were a top pick for 85% of campers. Get ready for exhilarating hikes, thrilling climbs, and water exploration.



## Unforgettable Camp Traditions

Campfires, s'mores, sing-alongs, and endless laughter—Girl Scouts loved these classic camp traditions, and they're waiting for you too.



# Brand New Ropes Courses

Camp Ehawee is home to exciting new low and high ropes courses. They're designed to help Girl Scouts build courage, strengthen confidence, and grow their teamwork skills—one step at a time.

## Low Ropes Course



The low ropes course is a great starting point for Girl Scouts who are new to ropes activities. This course focuses on team building, communication, and cooperation. With ground-level elements that encourage trust and problem-solving, Girl Scouts will strengthen their connection to each other while gaining confidence in a safe and supportive setting.

## High Ropes Course



For Girl Scouts ready to take their adventure to new heights, the high ropes course offers a thrilling next step. It includes two progressive levels, designed for older Girl Scouts or those who have built skills on the low ropes course. This challenge supports individual growth and group encouragement through scaffolded programming that increases in complexity.

## Climbing Wall & Zipline



Complete with a double-sided climbing wall with dimensional changes, and a gravity stop zipline, these elements add variety and complexity to our aerial sport offerings.

## Plan Your Experience

To include the ropes courses in your troop or service unit rental at Camp Ehawee, be sure to request a certified ropes course expert when making your reservation. With the right guidance and support, Girl Scouts can safely explore, grow, and thrive—together.



High Ropes

Low Ropes



“Girl Scouts is one of those places  
where you can fail, and make  
mistakes, but in a safe place”  
– Olive A.



Join us on May 9, 2026 for the Camp Ehawee 75th Open House





**New  
Weekly  
Structure!**



# DAY CAMP

## Camp Brandenburg

Discover your inner artist as you explore ‘Makers on the Move’ day camp! Spend your days at Camp Brandenburg creating art inspired by the outdoors and learning new skills in canoeing, target sports, and field games. Campers will explore the great outdoors at Camp Brandenburg while discovering how to design and build with sustainability in mind. Through exciting hands-on projects, Girl Scouts will learn how small ideas can make a big difference for our planet.

This camp is perfect for Girl Scouts ready to combine art, nature, and STEM while earning badges. Girl Scouts will earn different badges for each week they join us at day camp. The colors below correspond with to the sessions listed to the right. Register for one week or multiple!

### BADGES EARNED

- All - Trail Adventure
- Art and Design
- Create and Innovate
- Craft and Tinker

**New  
activities  
each week!**

Completing Grades PreK-4



**Date options:**

**June 22-26 (5 days)**

**June 29-July 3 (5 days)**

**July 6-10 (5 days)**

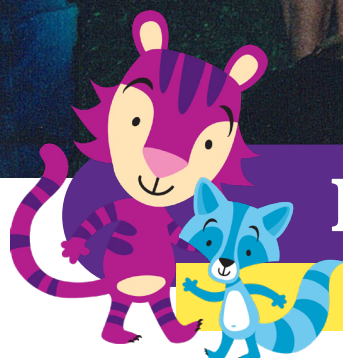
**July 13-17 (5 days)**

**July 20-24 (5 days)**

**Cost:  
\$225**







## MY GROWN-UP & I

### Camp Ehawee

Create unforgettable memories at My Grown Up & I Camp, a special 3-day, 2-night experience designed for Girl Scouts and their grown-ups! Campers and adults will explore nature through hikes, take on outdoor challenges, paddle together, and enjoy creative projects that spark curiosity and fun. This unique camp session emphasizes bonding, teamwork, and shared adventure—whether building resilience on the ropes course, learning new skills, or enjoying songs and stories around the campfire. Multiple adults may attend with a Girl Scout, but all must hold membership and have a completed background check to ensure a safe environment for all campers.

#### BADGES EARNED

- All levels - Camp and Trail Adventure Series

Completing Grades PreK-11 & Adult



Date options:

June 19-21 (2 nights)

July 24-26 (2 nights)

Cost per person:  
\$225

\$200  
early bird  
price







2 Night  
Delight!

## MINI CAMP

### Camp Ehawee

Grow your confidence, explore the outdoors, and make memories that last a lifetime at Mini Camp! Over three days and two nights at Camp Ehawee, campers will experience the excitement of overnight camp with hands-on adventures, outdoor challenges, and creative activities that inspire curiosity and fun.

From paddling in the pool to building skills on the low ropes course, campers will enjoy classic camp experiences while forming new friendships and learning teamwork, problem-solving, and leadership. Evenings are filled with songs and stories around the campfire.

Mini Camp is all about adventure, connection, and creativity—perfect for Girl Scouts ready to explore the outdoors, make new friends, and grow in nature.

#### BADGES EARNED

- Brownie: Trail Adventure, Cabin Camper
- Junior: Trail Adventure, Camper

Completing Grades 1–4



Date options:

June 14–16 (2 nights)

June 17–19 (2 nights)

June 21–23 (2 nights)

June 24–26 (2 nights)

June 28–30 (2 nights)

July 8–10 (2 nights)

Cost:  
\$295

\$265  
early bird  
price



# RESIDENT CAMP

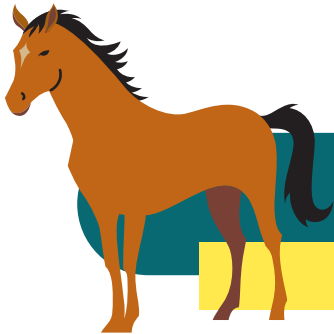
## Camp Ehawee

Connect with nature and history at Rooted in Nature, where six days and five nights at Camp Ehawee immerse Girl Scouts in outdoor adventures, environmental discovery, and historical exploration. Campers will canoe, hike, swim, and explore while learning about the plants, animals, and landscapes that make our region unique.

Hands-on activities bring the natural world to life, from identifying local flora and fauna to discovering historic landmarks and the stories behind them. Campers also enjoy classic camp experiences like archery, water fun, low and high ropes challenges, and creative crafts, all designed to build confidence, teamwork, and leadership skills.

### BADGES EARNED

- All Levels - Trail Adventure Series
- Junior - Camper, Flowers, Garden
- Cadette - Primitive Camper, Trees, Archery
- Senior - Adventure Camper, Sky, Paddling
- Ambassador - Survival Camper, Water



# HORSE CAMP

## Camp Ehawee

Saddle up for an unforgettable adventure at Horse Explorer Camp! Campers will spend two days at nearby stables, learning horseback riding and the essentials of horse care, including grooming, feeding, and understanding horse behavior. The week continues at Camp Ehawee with canoeing, swimming, target sports, and nature activities that combine outdoor adventure with hands-on learning.

Campers must wear long pants like jeans and boots for riding. Camp will provide riding helmets, but campers can bring their own if they have one.

### BADGES EARNED

- All levels - Trail Adventure Series
- Juniors - Camper, Horseback Riding
- Cadettes - Primitive Camper, Animal Helper
- Seniors - Adventure Camper

Completing Grades 3-11



### Date options:

July 12-17 (5 nights)

July 19-24 (5 nights)

July 26-31 (5 nights)

Aug. 2-7 (5 nights)

Cost:  
\$625

\$560  
early bird  
price

Completing Grades 3-11



### Date options:

June 14-19 (5 nights)

June 21-26 (5 nights)

June 28-July 3 (5 nights)

Cost:  
\$765

\$690  
early bird  
price



## WATER EXPLORER

### Camp Ehawee

Grab your paddles and get ready for an unforgettable adventure on the water at Water Explorer Camp! Over six days and five nights, campers will develop confidence, teamwork, and outdoor skills while exploring the Slough at camp and a full day on the Kickapoo River.

Beyond paddling, campers will enjoy low and high ropes challenges, swimming, and classic camp activities that build independence, problem-solving, and leadership skills. Evenings are filled with campfire fun, stories, and shared adventures with new friends.

#### BADGES EARNED

- All Levels - Trail Adventure Series
- Cadette - Primitive Camper
- Senior - Adventure Camper, Paddling
- Ambassador - Survival Camper

Completing Grades 5-11



Date options:

July 12-17 (5 nights)

July 26-31 (5 nights)

Cost:  
\$745

\$670  
early bird  
price





## TRAIL EXPLORER

### Camp Ehawee

Lace up your hiking boots and embark on a summer adventure at Trail Explorer Camp! Over six days and five nights, campers will explore scenic trails at Hixon Forest and experience an overnight backpacking trip at Perrot State Park, learning essential wilderness and survival skills along the way. Campers will also enjoy classic camp activities like swimming, canoeing, climbing on the new climbing wall, and low and high ropes courses. Evenings are filled with campfire stories, songs, and shared adventures with new friends.

Campers are required to have hiking boots for this adventure.

#### BADGES EARNED

- All levels - Trail Adventure Series
- Cadette - Primitive Camper, Archery
- Senior - Adventure Camper
- Ambassador - Survival Camper

Completing Grades 5-11



Date options:

July 19-24 (5 nights)

Aug. 2-7 (5 nights)

Cost:  
\$745

**\$670**  
early bird  
price





## EmpowerU

### UW-Whitewater

EmpowerU is a special opportunity designed just for our older Girl Scouts, offering a glimpse into the meaningful experiences available all the way through high school. The program highlights leadership development that help Girl Scouts grow in confidence, gain real-world skills, and become empowered and life-ready.

During this 3-day, 2-night stay on the UW-Whitewater campus, participants will explore college and career paths, build leadership skills, and connect with other teens who are ready for their next big adventure.

Plus, we'll add in some fun—like a bowling night—to round out the experience. EmpowerU shows Girl Scouts that their journey doesn't end here... it only gets bigger.

Completing Grades 7-11



Date:

July 24-26 (2 nights)

Cost:  
\$295



## YOUTH LEADERSHIP ACADEMY

### Representing Badgerland

Badgerland's Youth Leadership Academy (YLA)—formerly known as YLC—is a leadership-focused program created just for Girl Scouts in grades 9-12.

Our mission is to empower high school-age Girl Scouts to discover their leadership identity, build essential life and career skills, and form a supportive community rooted in Girl Scout values. If you're interested in joining YLA, contact [info@gsbadgerland.org](mailto:info@gsbadgerland.org) to get more information.

Completing Grades 8-11



Year Long Program

Cost:  
FREE



# COUNSELOR-IN-TRAINING 1

## Camp Ehawee

Ready to level up your camp experience? CIT Level 1 is a 6-day, 5-night program designed for Seniors ready to grow from camper to camp leader. Participants will dive into leadership fundamentals, learn camp logistics, and support campers while still participating in fun, hands-on activities.

Campers will rotate through archery, climbing, arts and crafts, canoeing, aerial sports, and more, gaining a behind-the-scenes understanding of how camp runs. CITs also develop essential skills in communication, teamwork, problem-solving, and responsibility—preparing them for future leadership roles at camp. This program now includes a small fee to help cover meals, lodging, and staff-led programming. No application necessary.

**BADGE EARNED:** Adventure Camper

**PIN EARNED:** CIT 1 pin



Completing Grades 8-9

S

Date:

July 26-31 (5 nights)

Cost:

\$100

\$90  
early bird  
price

# COUNSELOR-IN-TRAINING 2

## Camp Ehawee

Take your leadership journey to the next level with CIT Level 2, a 13-day, 12-night immersive program designed for Ambassadors who have completed CIT Level 1. This session gives you real-world experience in camp leadership—working with younger campers, co-leading activities, planning and executing service projects, and supporting the full camp community.

Throughout the two weeks, CIT 2s will: co-manage activity sessions under staff supervision, plan and implement camp traditions and large-group events, participate in a service project that leaves a positive mark on camp, and reflect daily to build strong leadership habits. The pace is fast, the responsibility is real, and the growth is huge. This program now includes a small fee to help cover meals, lodging, and staff-led programming. No application necessary.

CIT 2s will have the option to stay at camp and volunteer their time for the final two weeks of camp, or one week of their choosing, after they've completed the program.

**BADGE EARNED:** Ultimate Recreation Challenge

**PIN EARNED:** CIT 2 pin



Completing Grades 10-11

A

Date:

July 12-24 (12 nights)

Cost:

\$150

\$135  
early bird  
price



## Daisies

### Completing Grades PreK-K & Adult D

- July 24 (1 day)
- Cost: \$35 for youth & free for adults
- Madison College

You and your adult buddy get to learn about your unique fingerprints from a forensic investigator. Firefighters will teach you about fire safety and you get to spray water out of a fire hose. EMTs will help you put together a First Aid Kit and talk about how to care for others who might be injured.

#### BADGES EARNED

- Daisy Safety Award & Respect Authority Petal.

## Brownies

### Completing Grades 1-2 B

- August 6 OR August 7 (1 day)
- Cost: \$50
- Madison College

Meet firefighters, police officers and EMTs as they teach you skills they use every day. There's so much to learn, like how to use a walkie-talkie, safely search a room, and handle a fire hose as a team. You'll learn some first aid skills and how to call 911 to ask for help for someone who is injured.

#### BADGE EARNED

- Brownie First Aid Badge

## Juniors

### Completing Grades 3-4 J

- July 23-24 OR July 30-31 (2 days; day camp)
- Cost: \$75
- Madison College

Build your own courage, confidence, and character while you work with first responders who will teach you skills they use every day. You'll learn how to care for a patient, put out a 'fire,' apprehend a suspect, and so much more! During this amazing day and a half experience you will get to know real firefighters, police officers, and EMTs. Come see what the excitement is about!

#### BADGES EARNED

- Junior First Aid & Detective Badges

## Cadettes

### Completing Grades 5-7 C

- July 20-22 (2 nights; overnight)  
OR August 3-5 (3 days; day camp)
- Cost: \$125 / \$175
- Madison College

Building character is the focus and you'll work in teams to accomplish tasks that seem impossible. In order to put out that fire, save the patient, and solve the crime you, will need to work together. Along the way, you will learn skills in the fire, police, and EMS professions and put into action your courage, confidence, and character. **At the end of your 'shift' head home to share your adventures with family or bunk at Camp Brandenburg, session dependent.**

#### BADGES EARNED

- Special Agent Badge & First Aid Badge; Heartsaver CPR Certification

## Seniors and Ambassadors

### Completing Grades 8-12 S A

- July 26-30 (3 nights; overnight)
- Cost: \$275
- Madison College

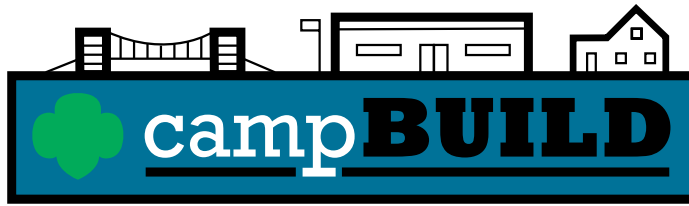
What is it truly like to be a firefighter, police officer, or EMT? Meet professionals in these careers and learn how you can follow in their footsteps. This camp will push your limits and bring you greater confidence to respond in an emergency. Rappel from a building, use the Jaws of Life® to extricate a crash victim, and fight a 'fire.' Manage an airway, start an IV, and certify in CPR. Analyze evidence at a crime scene, handcuff a suspect and practice self defense. At the end of your 'shift' head to Camp Brandenburg to decompress and have some fun with your crew. This experience will be engaging, powerful, and who knows, it might just change your life.

#### BADGE EARNED

- Senior First Aid Badge or Ambassador First Aid Badge, CPR for the Professional Rescuer Certification

**CampDocs are due on June 26  
for all CampHERO sessions.**





## Material Handler

D

### Completing Grades PreK–K & Adult

- August 8 (8 a.m.–Noon) OR (1–5 p.m.)
- Cost: \$35 for youth & \$0 for adult
- Madison College

Grab your favorite adult buddy and get ready to build! At CampBUILD Material Handler, they explore carpentry in a safe, welcoming space designed just for them. Daisies start by building a strong foundation as they learn, experiment, and discover how fun building can be.

NOTE: While adults participate for free, registration is required to hold your spot.

#### BADGE EARNED

- Daisy Craft and Tinker Badge

## Skilled Helper

B

### Completing Grades 1–2

- Aug. 4 (8 a.m.–Noon) OR (1–5 p.m.)
- Cost: \$50
- Madison College

Step into the workshop and get building. You'll practice safe tool skills, work together with fellow builders, and create a complete project from start to finish. It's all about trying new skills, having fun, and leaving with something you made yourself.

#### BADGE EARNED

- Brownie Craft and Tinker Badge

## Pre-Apprentice

J

### Completing Grades 3–4

- July 25 OR Aug. 3 (1 day)
- Cost: \$75
- Madison College

You'll learn how to use tons of tools the smart and safe way, team up with other Girl Scouts, and build a project that shows off your skills. It's fun, it's hands-on, and it's all you.

#### BADGE EARNED

- Junior Craft and Tinker Badge

## Apprentice

C

### Completing Grades 5–7

- July 23 OR July 24 (1 day)
- Cost: \$100
- Madison College

Cadettes dive into advanced carpentry using circular saws, drills, sanders, and hammers with growing skill and confidence. With expert support, they'll design, measure, and build an original project that reflects their technique and personal style.

#### BADGE EARNED

- Cadette Woodworker Badge

## Journeyworker

S

A

### Completing Grades 8–12

- Aug. 6–8 (3 days; day camp)
- Cost: \$125
- Madison College

A Journeyworker has learned their trade through apprenticeship and now works for “a day's pay.” Learn carpentry skills from local building trades professionals and use the tools of the trade to build a project to take home. Your crew will work together to learn important skills, build a take-home project and spend the last day putting those skills to use as they assist Daisy Material Handlers. From learning new skills to instilling them in our next generation of CampBUILDers, Journeyworkers will do it all!



**Our CampBUILD  
Motto is Be Safe,  
Have Fun!**

# Registration and Payment Details

## Registration

Camp registration is completed online and is first-come, first-served. Registration opens on January 15, 2026 at Noon!

### HOW TO REGISTER FOR CAMP

1. Go to [www.gsbadgerland.org](http://www.gsbadgerland.org)
2. Click the new 'Camp' icon 
3. Click on the program to start registration
4. Pay deposit or make payment in full
5. Registration closes 3 weeks before the first day of the camp

If you need help registering online, call our Customer Care Team for assistance: 800.236.2710. Their hours are Monday through Thursday from 10 A.M. – 5 P.M.

### CONFIRMATION EMAILS

You will receive a confirmation email within 24 hours. A reminder email will be sent about three weeks before your camp's start date.

## Camp Deposits

\$50 deposit for any camp costing \$200 or more. Remaining balances are due three weeks prior to camp start date. **Camp Deposits are non-refundable**, but may be transferred to another camp session within the same summer if notice is given more than three weeks prior to the camp session start date. Camps costing less than \$200 do not have a deposit and must be paid in full at the time of registration.

## Cancellation Policy

Occasionally the need arises for council to cancel a camp due to weather, safety concerns, or low registration. Please maintain accurate contact information in MyGS so staff can reach you. If canceled, the program may be rescheduled or refunded.

## Refund Policy

Refunds are available for cancellations made by the registration deadline or in cases of serious illness or death in the family. A \$10 cancellation fee per event and any non-refundable deposits will be deducted. Full refunds are issued after the deadline only if the program is canceled.



### DID YOU KNOW?

You can earn your way to camp with the Girl Scout Cookie Program!

### Earn Your Way to Camp

Campers are encouraged to earn all or part of their way to camp through the Girl Scout Cookie Program and Badgerland Fall Fundraiser. They can choose Badgerland Bucks as a reward. These virtual dollars can be used to pay for all or a portion of camp, all on their own, which instills independence and pride.

Badgerland Bucks earned during the 2026 Cookie Program will be distributed early June.

### TWO WAYS TO USE BADGERLAND BUCKS

- 1) Call Customer Care at 800.236.2710 to complete a registration over the phone using Badgerland Bucks.
- 2) Register and pay online with a credit card, then complete and submit a Badgerland Bucks Reimbursement Form at [www.gsbadgerland.org/forms](http://www.gsbadgerland.org/forms).

### IMPORTANT ADVICE

Since Badgerland Bucks are not sent out until early June, we strongly suggest signing up for camp and paying the deposit ASAP. You are able to submit the Badgerland Bucks Reimbursement form to refund your deposit and replace with Badgerland Bucks.

## Financial Assistance - Camperships

We want all Girl Scouts to have the opportunity to attend camp. Scholarships for program registration is available to qualifying families for Badgerland-sponsored programs. All Girl Scouts, however, should make a good-faith effort to earn part of their way to camp through the Girl Scout Cookie Program and Badgerland Fall Fundraiser. Find the form and qualifying information at [www.gsbadgerland.org/forms](http://www.gsbadgerland.org/forms).



# You've Registered for Camp—What's Next?

## Submit Your Camper's Required Health Forms

Now that you've reserved your spot, it's time to complete the final steps to ensure a safe and seamless camp experience. We use CampDoc.com, a secure electronic system, to gather and manage health information for all campers. Here's everything you need to know:

### LOOK FOR AN EMAIL FROM CAMPDOC

Once registered, you'll receive an email from CampDoc inviting you to create an account. Follow the link to complete your camper's health profile and upload all required health records. This information must be submitted three weeks before camp starts (CampHERO sessions are due June 26). Health forms must be submitted by the deadline.

**Missing the deadline will result in cancellation of your camp reservation without a refund.**

The CampDoc logo features the word "Camp" in orange and "Doc" in green, with a small green cross over the 'o' in "Doc".

CampDoc

### HEALTH DOCUMENTATION REQUIREMENTS

For campers staying 4 nights or more:

- Health History
- Physical Exam (signed by a licensed physician, PA, or RN within 24 months of camp start date)
- Immunization Record or Waiver

For campers staying 3 nights or less:

- Health History
- Immunization Records or Waiver are optional

### Buddy Requests

Campers can request up to three buddies in CampDoc, and we'll do our best to place them in the same sleeping area for the week.

**Is your best friend not a Girl Scout, yet?**

Invite them to join Girl Scouts and come to camp with you!

### For the Best Camper Experience Share All Health Information with Badgerland

CampDoc allows you to share physical and mental health information to help us provide the best possible care and support at camp. Our camp staff, counselors, and Health Officer are trained to support all campers, and no camper will be treated differently based on the information shared. The more we know, the better we can ensure a safe, enjoyable, and unforgettable camp experience.

### Review Camp Information Packet

Every camper will receive a Camp Information Packet for their camp. You can find your camp packet when you register for your camp, on our registration webpage, and in your camp reminder email (sent 3 weeks before camp).

CONTAINS: Packing lists, check-in/check-out times, maps and directions, accommodations, and more!

**PRO TIP:** Label everything you bring to camp

### Rallyhood & Camp Communication

Write a post and connect with other families or set up carpooling in the Badgerland Hub. Camp specific questions? Contact [info@gsbadgerland.org](mailto:info@gsbadgerland.org).

Badgerland staff will communicate via email for any reminders or urgent camp communications.

### Camper Photos (not guaranteed)

After camp, we'll also share photos taken during your camper's stay, though we can't guarantee any images. To guarantee camp images, send your camper with a disposable or small digital camera to capture camp though their own lens!

# Camp Add-Ons

Surprise Them with Special Camp Items

## Ehawee Camp Care Kit

Celebrate 75 amazing years of Camp Ehawee with the Rooted in Nature Camp Care Kit! This special edition kit is filled with fun, nature-inspired items that add extra joy to every camper's experience. Each kit includes tie-dye sunglasses, a beach/pool towel, a Camp Ehawee bucket hat, a glow-in-the-dark pillowcase with a fabric marker for friends to sign it, a plushie with Camp Ehawee 75th Bandana, and a commemorative Camp Ehawee 75th Anniversary bag. Kits are available for \$60.

## Brandenburg Camp Add-Ons

This year, Camp Brandenburg day campers can choose from fun add-on items instead of a full Camp Care Kit when registering for camp sessions! We're offering single items to keep things simple and flexible—like the popular Brandenburg bandana from last year's kit, available for \$8.00. Add-ons must be pre-ordered and will be waiting for campers on their first day of day camp. It's easy to add a little extra camp spirit to their adventure!



## The Trading Post

The Trading Post at Camp Ehawee stocks fun items, camp souvenirs, friendship jewelry, games, stuffed animals, and more.

Prices range from \$2-\$45. No food items are available for purchase.

Your camper may bring spending money or Badgerland Bucks to shop at the Trading Post at Camp Ehawee.

**Payment Options:** Even more convenient—when you register for camp you can pre-load your camper's Trading Post account with a dollar amount of your choosing. All in one transaction!



# T-Shirts & Patch

## Free camp t-shirts are happening!

Every camper will head home with this summer's exclusive Badgerland Camp t-shirt—how cool is that? Just select their t-shirt size when completing the CampDoc forms, and it'll be ready and waiting when they arrive at camp. CampHERO and CampBUILD participants will receive their own special t-shirt, included with registration. Campers also bring home a 2026 Badgerland Camps patch to proudly display on the back of their uniform, plus any badges they earn during their camp adventure, which go on the front of their uniform.

## Early Bird Discount:

Register for select Camp Ehawee sessions between January 15–31 to save! Discounted prices are listed for each eligible camp.

Registration  
opens on  
Thursday,  
January 15 at  
noon!

# NEED HELP?

Let's get you registered  
for a Girl Scout experience.

Contact our friendly, helpful  
Badgerland Team.

[info@gsbadgerland.org](mailto:info@gsbadgerland.org)

800.236.2710

Monday through Thursday  
from 10 A.M. – 5 P.M.





# Plan a Troop Camp Outing!

## Reservations open January 15 at noon.

Lock in summer dates, some property reservations are still available through August 31!

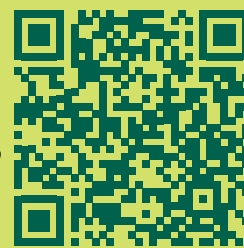
Camp Brandenburg and Camp Ehawee are available for Girl Scout troops and service units (SUs) to use! It's a reservation on Checkfront available year round.

Troops and service units may plan and host their own outdoor adventures at Camp. Troops and SUs will coordinate, plan, and host these experiences for Girl Scouts. Badgerland staff will not be on site, but Girl Scouts may request an expert for specialized activities.

You're invited to camp!

### VOLUNTEERS NOTE

As part of the camp reservation booking process, we will also collect all the necessary certifications needed, roster sheets, and emergency contact forms for all attendees.



Scan to Book  
on Badgerland  
Checkfront



## Night Sky

### Camp Ehawee

- Max occupancy: 38
- Cost: \$150 per 24 hour period

Night sky is a great introduction to camp! Equipped with bunk style rooms, a full kitchen, double-sided fireplace, spacious bathrooms, and more. This is a perfect spot for comfortable camping, and lots of fun. Night Sky is ADA compliant and is situated just beside Hope Lodge, tucked into the trees. Night Sky also offers a full basement in the event of severe weather.



## Meadow Haven

### Camp Ehawee

- Max Occupancy: 33
- Cost: \$150 per 24 hour period

Meadow Haven is a perfect spot for new and seasoned Camp Ehawee campers. Complete with multiple bunk rooms, a private bedroom, 2 bathrooms, full kitchen, fire pit, full basement for storm sheltering, and more. Meadow Haven is situated just across the parking lot from the iconic Hope Lodge.





## Hilltop

### Camp Brandenburg

- Max occupancy: 34
- Cost: \$150 per 24 hour period

Hilltop is a unique lodge situated in the center of Camp Brandenburg. The four bunkhouses branch off from the main activity area of the lodge and up the side of the hill. Each bunkhouse sleeps 8 campers in addition to cots off the main living area for leaders/volunteers. Hilltop also contains a kitchen and two modern bathroom facilities.



## Beehive

### Camp Brandenburg

- Max occupancy: 18
- Cost: \$75 per 24 hour period

Beehive is the perfect spot for that very first overnight camp experience. Four bedrooms with bunks, a kitchen, bathroom, and an open activity area occupy the main floor. The full basement offers another activity area as well as a safe haven in the event of severe weather. Outside are trails through the nearby forest, a grassy play area, and a fire ring.



## Forest Glen

### Camp Brandenburg

- Max Occupancy: 22
- Cost: \$50 per 24 hour period

Forest Glen is a more traditional camp setting with seven cabins, five of which are brand new this year. When your troop is ready for their next adventure, Forest Glen is ready to shelter you on a more rustic journey. Pit latrines are available, there is no electricity in the cabins, and meals are cooked over an open fire.

Make sure to also reserve the Nature Center at Forest Glen!







## VIP CAMP DAY

### Camp Ehawee

This exclusive, no-cost event is our way of saying thank you to Girl Scouts who renew their memberships by May 11—and this year's celebration will be extra special as we honor 75 years of Camp Ehawee adventures.

Get ready for an unforgettable day exploring Ehawee's natural beauty and brand-new ropes course opportunities designed for all levels.

VIP Camp Day is open to all Girl Scout levels—from Daisies through Ambassadors—and their special adults. Come with your adult for a day of outdoor fun, or gather your troop for a memorable road trip to camp.

**Renewing your membership early is your ticket to join in the fun.** Keep an eye on your email by early April for all the details and registration information—then get ready to celebrate early renewal and 75 years of Camp Ehawee in true Girl Scout style!

Adults



Dates:

August 15

Cost:  
FREE

### Stay Up-To-Date:

Watch your email for early renewal reminders, or check out our website at [gsbadgerland.org](https://gsbadgerland.org) for more.







# TRAVEL WITH BADGERLAND

## North Lakeland



Grades 6-12 & Adults

**Date: August 10–12, 2026**

**\$450 per person**

Location: North Lakeland Discovery Center

Registration Deadline: June 30, 2026

Get ready for an outdoor adventure packed with discovery! North Lakeland's Naturalists will guide you along beautiful forest trails, helping you spot signs of wildlife, unique plants, and all kinds of hidden wonders in nature.

Then it's time to hit the water! Paddle down the peaceful Manitowish River, where you might catch a glimpse of bald eagles soaring overhead, river otters splashing along the shore, or great blue herons lifting off from the marsh. Your Naturalists will lead the way, pointing out amazing wildlife and cool plants as you glide through northern forest and wetlands.

Examine scat, fur, and skulls to learn how to identify critters by the traces they leave behind—then put your detective skills to the test in a fun, interactive challenge. Transportation is included.

## Expedition: London



Grades 5-12 & Adults

**Date: July 26–31, 2027**

**\$4,041 per person**

Location: London, England

Registration Deadline: March 8, 2027

Get ready for the adventure of a lifetime as we travel across the Atlantic to explore the heart of England—London!

From iconic landmarks like Big Ben and Buckingham Palace to a magical visit to Stonehenge and Windsor Castle, you'll step into history and culture with every moment. You'll take part in a special pinning ceremony at Pax Lodge, one of the World Centres for Girl Guides and Girl Scouts, celebrating your place in the global movement.

With guided tours and plenty of time to explore, this trip is the perfect mix of fun, friendship, and discovery.





4801 S. Biltmore Lane  
Madison, WI 53718

Nonprofit  
Organization  
US Postage  
PAID  
Madison WI  
Permit No. 2127

CONTACT US  
800.236.2710  
[gsbadgerland.org](http://gsbadgerland.org)  
[info@gsbadgerland.org](mailto:info@gsbadgerland.org)

FOLLOW US



**REGISTRATION OPENS THURSDAY, JANUARY 15 AT NOON.**  
**Discounted Pricing on Camp Ehawee Overnight Programs Jan. 15–31!**

