



2025 Badgerland Council Programs

September 2025 - May 2026



Table of Contents

Message from Us	3
New Programs Format	5
Fall Programs	6-10
Partner Programs	11-12
Winter Programs	13-16
Spring Programs	17-20
Adult Programs	21-22
Leadership Awards	23-24
Summer Preview	25
Getting Registered	26-27
Other Program Options	28
Property Reservations	29
Contact Us	30



A Message From the Ed Department

Hey Girl Scouts!

We know every journey is unique, and we're here to help your Girl Scout make theirs unforgettable. This year, we're proud to share a refreshed lineup of council-led programs built around the four core pillars of Girl Scouting: STEM, Entrepreneurship, Life Skills, and Outdoors.

These pillars form the foundation of the Girl Scout experience and reflect everything we believe in—building courage, confidence, and character through hands-on exploration, skill-building, and leadership in action.

Our programs are intentionally designed to offer experiences youth don't always get in school—hands-on opportunities that build real-world skills, spark new passions, and prepare Girl Scouts for what comes next. From career readiness and financial literacy to healthy living, teamwork, and environmental stewardship, our events go beyond the classroom to help future leaders thrive in every area of their lives.

And it's not just what we do—it's how we do it. Badgerland programs provide an exceptional out-of-school experience: engaging, enriching, and thoughtfully created to help young people grow into strong, capable leaders. These aren't just events—they're stepping stones to a bright future.

The next pages are filled with exciting opportunities to grow, explore, and thrive through Badgerland's school-year council programs. We invite you and your Girl Scout to dive in and design the year of your dreams—one badge, one challenge, one memory at a time.

Adventure starts here. Let's go!

YOUR BADGERLAND EDUCATION DEPARTMENT

Have ideas or questions?

We'd love to hear from you! If you or your Girl Scout have thoughts about the kinds of programs you'd like to see—whether it's a topic you're passionate about, a skill you want to explore, or a question about how it all works—reach out and let us know. Your voice helps shape the future of Badgerland programming, and we're always listening. Reach out at EducationTeam@gsbadgerland.org.



Program Pillars

At Girl Scouts, everything we do is built around four key pillars—STEM, Outdoors, Life Skills, and Entrepreneurship. These pillars help every Girl Scout try new things, build confidence, and discover their own strengths. Whether they're exploring science, camping under the stars, learning everyday skills, or running their own cookie business, Girl Scouts gain experiences that prepare them for a lifetime of leadership and adventure.

STEM

The STEM pillar focuses on hands-on learning in science, technology, engineering, and math. Girl Scouts explore coding, robotics, engineering challenges, and real-world problem solving—all while sparking their creativity and innovation. Every activity emphasizes collaboration and critical thinking, encouraging Girl Scouts to explore how things work and to boldly imagine what's next.



Entrepreneurship

Through our Entrepreneurship pillar, Girl Scouts develop their entrepreneurial mindset with hands-on experiences that grow business skills and leadership confidence. From Cookie Rally Kits that help them market, budget, and sell like pros; to partner programs that explore branding, financial literacy, and goal setting, Girl Scouts are building the tools to lead today—and take charge of tomorrow.



Life Skills

The Life Skills pillar helps Girl Scouts build independence, self-awareness, and resilience. Girl Scouts practice civic engagement, decision-making, personal wellness, and everyday responsibilities in fun, empowering ways. With a focus on communication, leadership, and whole-body wellness, they're developing the essential life skills that prepare them to navigate challenges and lead with confidence.



Outdoor

The Outdoor pillar invites Girl Scouts to explore, connect, and thrive in the natural world. Whether hiking, camping, learning survival skills, or practicing Leave No Trace principles, Girl Scouts gain confidence and self-reliance in every outdoor adventure. These programs encourage teamwork, stewardship, and curiosity—helping youth discover both the world around them and their own inner strength.



Plan Your Girl Scout Year, One Trimester at a Time

We're Moving to Trimesters

We're introducing a new trimester format to make Girl Scout program planning clearer and more consistent. Each trimester follows the school calendar, giving you an easy way to see what's coming and plan ahead.

This booklet includes all council programs for trimesters 1 and 2 (school year programming). You will receive summer program information in the new year. Partner programs are added throughout the year, and you'll hear about them in our trimester program emails, or through our website and monthly newsletters. These trimester program emails also serve as reminders for council programs and go out at the end of each trimester:

- January – Final Partner Program details for trimester 2
- May – Final Partner Program details for trimester 3
- September – Final Partner Program details for trimester 1 of the next program year

Please note: new partner programs will be added online as they are scheduled with an expanding list of community partners. For the most up-to-date information, check Rallyhood—it's where we'll post new opportunities as they become available. You'll also see highlights in our monthly newsletter, but [Rallyhood](#) is the fastest way to stay in the loop. This digital document will not be updated regularly. For the most current event details, including any changes or cancellations, please visit our [Events](#) page on the Badgerland website.

Council-Hosted Events vs. Partner Programs

Council-hosted events are created and led by Badgerland staff and volunteers. These programs are thoughtfully designed to align with the Girl Scout Experience and include the support, guidance, and presence of our council team throughout the event. Partner programs, on the other hand, are hosted by trusted community organizations who bring their own expertise to the table. These partners plan and run the experience independently, and while the event still supports Girl Scout values, council staff may not be present. Partner programs are a great way to connect with local resources and explore new opportunities in your community.



Trimester 1

October, November, December, January



Trimester 2

February, March, April, May



Trimester 3

June, July, August, September

September: Finish Your Year Strong

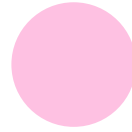
Events are categorized by Girl Scout pillar:



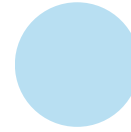
Outdoors



Life Skills



Entrepreneurship



STEM



State
Parks!



D
B
J
C
S
A
A

Girl Scouts Love State Parks [Grades K-12 & Adults] Sept. 1-30, 2025



Location: WI State Parks
Badge/Patch: Girl Scouts
Love State Parks Fun
Patch
Price: \$5

Take the challenge anytime or head out to explore your local state parks during this year's Girls Scouts Love State Parks Weekend!

D
B
J
C
S
A
A

Annual Meeting & On My Honor: Celebrating Volunteers [K-12 & Adults] - September 6, 2025

Location: Waterloo, WI
The Venue at River's
Edge

Join an Annual Meeting for board elections and leadership remarks, then honor and celebrate volunteers across Badgerland with awards, including Girl Scouts of the USA distinctions. All are welcome!



The Fall BFF Sale gives your troop or Juliette (individually registered) Girl Scout a fun way to jumpstart funding for the year. **Sale starts Oct 1.** In-person sales run Oct 1–27. Online ends Oct 29. Watch your inbox for training and sale details.



BRAVE. FIERCE. FUN!

This fall's product program is all about being Brave. Fierce. Fun! Just like this year's mighty mascot, the grizzly bear.



Grizzlies are strong, smart, and full of energy—just like you! Whether they are climbing, swimming, or preparing for winter, they do it with strength and confidence. Get ready to channel your inner grizzly as you take on this year's Badgerland Fall Fundraiser Program. Let's show our community just how bold Girl Scouts can be!



Leading
others



D
B
J
C
S
A
A

Juliette Jamboree [Grades K-12, Adults] **October 4, 2025**



Location: Madison, WI
Price: \$5/Youth, Free for Adults

Individually registered Girl Scouts will connect with peers of all ages, explore activities based on the Girl Scout pillars, enjoy fun crafts and social time, get first dibs on the new year-long Juliette patch program, and unlock a special Sashay offer.

D
B
J
C
S
A
A

Fall Harvest Camporee [Grades K-12 & Adults] **October 10-12, 2025**



Location: Mindoro, WI
Badge/Patch: Outdoor Art (all ages)
Price: \$150/ Youth; \$125/ Adult

Enjoy pumpkin painting, hayrides, and cider making; take part in target sports, canoeing, and arts & crafts; and embark on a two-night camp adventure designed for first-time campers to dive into camp life.

J
C
S
A

True North Training [Grades 4-12] October 18, 2025



Location: Madison, WI
Badge: True North Award
Price: \$25/Youth

Explore courage, confidence, and character through hands-on activities, develop a service-focused action plan for community change, and connect with peers to build leadership skills.

C
S
A
A

CPR/First Aid/AED [Youth 13+ and Adults] **October 25, 2025**



Location: Madison, WI
Price: \$40
Certification: Two-Year First Aid/CPR/AED for Adult/Child/Infant

This blended course combines pre-course online modules with an in-person session, awards a two-year certification, offers optional refresher courses, and covers CPR, first aid, Epi-Pen, and inhaler administration to meet Badgerland Girl Scouts and Wisconsin state requirements.



J
C
S
A

Aide to Lead [Grades 4-12] November 1, 2025



Location: Madison, WI
Leadership Center
Badge/Patch: Aide Award
Price: \$25/Youth

Girl Scouts will build confidence through hands-on leadership sessions, inspire younger Girl Scouts by demonstrating courageous leadership, and explore what leadership means to them as they develop their own unique styles.

C
S
A
A

CPR/First Aid/AED [Youth 13+ and Adults] November 22, 2025



Location: Madison, WI
Price: \$40
Certification: Two-Year
First Aid/CPR/AED for
Adult/Child/Infant

This blended course combines pre-course online modules with an in-person session, awards a two-year certification, offers optional refresher courses, and covers CPR, first aid, Epi-Pen, and inhaler administration to meet Badgerland Girl Scouts and Wisconsin state requirements.

Don't miss out on new programs added!

New partner programs are always being added. Don't miss out! Stay up-to-date on Rallyhood and MyBadgerland.



[Go to
Rallyhood](#)



[Go to
MyBadgerland](#)

November Highlight



STEMinist: Cybersecurity, La Crosse [Grades K-12 & Adults] November 8, 2025

Location: La Crosse, WI
Badge: Cybersecurity Series (Basics, Safeguards, and Investigator) All Levels
Price: \$35/Youth, Free for Adults

Girl Scouts will explore how cybersecurity professionals protect people, systems, and data; build skills in online safety, digital privacy, and ethical decision-making through hands-on challenges; and collaborate with peers and mentors on real-world scenarios to earn all three cybersecurity badges.

STEMinist: Cybersecurity, Madison [Grades K-12 & Adults] November 15, 2025

Location: Madison, WI
Badge: Cybersecurity Series (Basics, Safeguards, and Investigator) All Levels
Price: \$35/Youth; Free for Adults

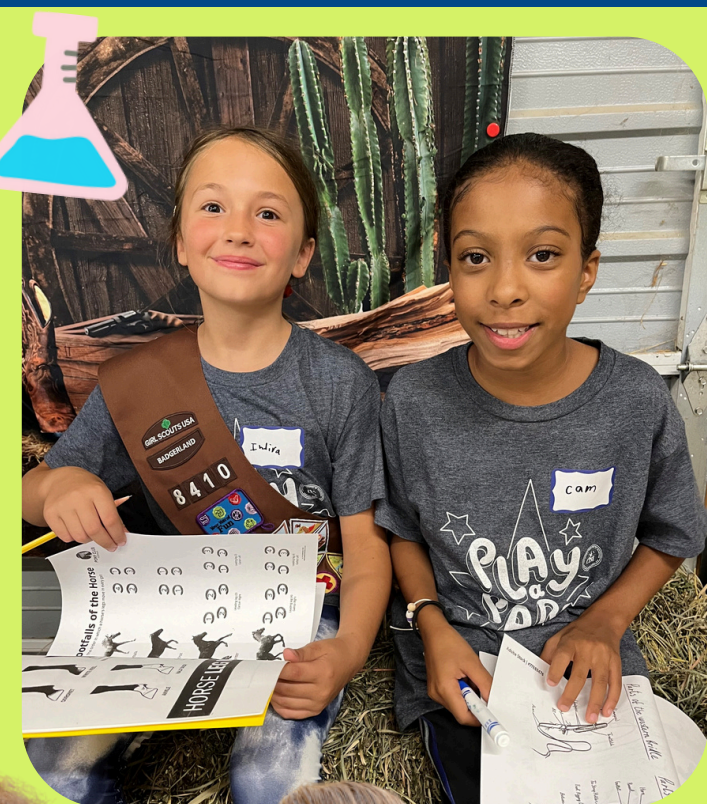
Girl Scouts will explore how cybersecurity professionals protect people, systems, and data; build skills in online safety, digital privacy, and ethical decision-making through hands-on challenges; and collaborate with peers and mentors on real-world scenarios to earn all three cybersecurity badges.



Women make up only
26% of the STEM
workforce—despite
being half the overall
labor force.

(Source: U.S. Department of Labor, Women's Bureau)

Trimester 1 Partner Programs



J

C

S

A

Devil's Lake Top-Rope Climbing [Grades 4-12] **Sept. 21, 2025**



Location: CCC Trailhead,
Merrimac, WI
Badge/Patch: Climbing
Badge
Price: \$95/Youth

Girl Scouts will scale Devil's Lake rock cliffs, apply creative problem-solving while supporting each other, connect with nature in a hands-on setting, and master climbing safety systems and routine gear checks.

C

S

A

Climb with Courage [Grades 6-12] Sept. 28, 2025

Location: Madison, WI
Badge/Patch: Climb with
Courage Fun Patch
Price: \$20/Youth

Learn and practice basic climbing techniques and belaying, master pre- and post-climb body care, and challenge themselves to reach new heights.

C

S

A

A

EPIC Trek with EPIC Systems [Grades 6-12 & Adults] - September 27, 2025



Location: Verona, WI
Badge/Patch: EPIC Trek
Patch
Price: \$15/Youth; Free for
Adults

Tour Epic Systems' themed campus, meet professionals to explore STEM careers, and discover how software drives innovation in healthcare and beyond.

J

Finding Your Voice: Playing in the Past [Grades 4-5 & Adults] September 27, 2025



Location: Madison, WI
Badge/Patch: Juniors
Playing the Past Badge
Price: \$25/Youth; Free for
Adults

Girl Scouts will join a theater workshop at MYArts led by Childrens Theater of Madison teaching artists, create and perform historical characters using costumes and games, and share their work with peers.

B

Finding Your Voice: Dancer [Grades 2-3 & Adults] September 27, 2025



Location: Madison, WI
Badge/Patch: Brownie
Dancer Badge
Price: \$25/Youth; Free for
Adults

Take a dynamic dance workshop led by Childrens Theater of Madison teaching artists, learn and create choreography, showcase their routines with fellow Girl Scouts, and enjoy a collaborative, interactive event at MYArts.

Trimester 1 Partner Programs



Pit
Crew!



Finding Your Voice: Daisy Art & Design [Grades K-1 & Adults] September 27, 2025



Location: Madison, WI
Badge/Patch: Daisy Art and Design Badge
Price: \$25/Youth; Free for Adults

Girl Scouts will join a Childrens Theater of Madison-led theater workshop at MYArts, using design thinking, body, voice, and imagination to create stories, share their creations with peers, and earn the Daisy Art & Design Badge.

Finding Your Voice: Public Speaking [Grades 6-8 & Adults] September 28, 2025



Location: Madison, WI
Badge/Patch: Cadette Public Speaking Badge
Price: \$25/Youth; Free for Adults

Girl Scouts will join a Childrens Theater of Madison-led public speaking workshop at MYArts to build vocal projection, body awareness, and stage confidence through theater games, share their work with peers, and earn their Cadette Public Speaking Badge.

Finding Your Voice: Troupe Performer [Grades 9-10 & Adults] September 28, 2025



Location: Madison, WI
Badge/Patch: Senior Troupe Performer Badge & Children's Theater of Madison Patch
Price: \$25/Youth; Free for Adults

Girl Scouts will join a Childrens Theater of Madison theater workshop at MYArts to learn show production basics, collaborate on performance ideas, expand skills, and share with peers to earn their Troupe Performer Badge.

Motorsport Mastery: Exploring Career Opportunities for Youth [Grades 6-12 & Adults] November 1, 2025



Location: Fitchburg, WI
Badge/Patch: Kellymoss Racing Patch
Price: \$15/Youth; Free for Adults

Girl Scouts will explore motorsports careers—from engineering to media, engage in hands-on challenges in engineering, marketing, pit crew, logistics, and SIM racing, and connect with women professionals for insight and inspiration.



C

8th Grade Slumberbash: Mission Adventure
[Grade 8] December 6-7, 2025



Location: Madison, WI
Badge: Secret Agent
Price: \$75/Youth

Uncover hidden clues and decode secret messages to solve a golden mystery. Work together to follow maps, analyze artifacts, and complete thrilling challenges. Build problem-solving and teamwork skills while earning their Secret Agent Badge.

J

5th Grade Slumberbash: Mission Adventure
[Grade 5] December 13-14, 2025



Location: Madison, WI
Badge: Detective
Price: \$75/Youth

Learn spy-worthy skills like fingerprinting, codebreaking, and evidence analysis. Take on a secret mission filled with mystery, gadgets, and hands-on challenges. Build confidence and teamwork as they earn their Detective Badge.

Don't miss out on new programs added!

New partner programs are always being added. Don't miss out! Stay up-to-date on Rallyhood and MyBadgerland.



[Go to Rallyhood](#)

[Go to MyBadgerland](#)

Frosty Fun!



D

B

J

C

S

A

A

Frosty Fun-Winter Camporee [Grades K-12 & Adults] January 9-11, 2026



Location: Mindoro, WI
Badge/Patch: Snow Adventure (all ages)
Price: \$150 /Youth ; \$125 per Adult

Girl Scouts will enjoy snowshoeing and snow fort building, take part in indoor crafts and baking, and spend two nights at Camp Ehawee for a first-time camper introduction to camp life.

D

B

J

C

S

A

A

Bots and Beyond [Grades K-12 & Adults] January 17, 2026



Location: Madison, WI
Badge: Robotics 1
Price: \$20/Youth; Free for Adults

Girl Scouts will get hands-on with robotics gear, team up with experts to explore how robots move and think, and bring robots to life through challenges that spark imagination and showcase their skills.

C

S

A

Illuminate Your Leadership: Torch Award [Grades 6-12] January 24, 2026



Location: Madison, WI
Badge/Patch: Torch Award
Price: \$25/Youth

Girl Scouts will identify their unique strengths, values, and leadership styles to build confidence; gain tools for idea development, action planning, and inspiring teamwork; and strengthen skills in active listening, clear communication, and collaboration to lead inclusive teams.



D

NextGEN Gamers [Grades K-12 & Adults]

B

February 7, 2026

J

C

S

A

A

Location: Madison, WI
Badge: Coding 2, Digital
Game Design (All Levels)
Price: \$20/Youth; Free for
Adults



Girl Scouts will explore digital game design by creating their own games, team up with developers and tech experts to bring coding to life, and earn the Coding for Good: Digital Game Design badge.

D

B

Little Leaders [Grades K-3] February 14, 2026

Location: Madison, WI
Badge/Patch: Fun Patch
Price: \$20/Youth

Girl Scouts will build confidence and teamwork through hands-on leadership games, learn to be kind, helpful leaders in their troop, school, and community, and make new friends while leading with heart.

Cookie Season

The 2026 cookie sale dates are:

February 21– April 12

Watch your inbox for training and sale details.

A new
cookie is
coming!

Announcing this fall





J

C

S

A

Leading with Heart and Mind [Grades 4-12] **February 14, 2026**



Location: Madison, WI
Badge/Patch: Fun Patch
Price: \$20/Youth

Girl Scouts will develop leadership through hands-on team challenges and role-playing, enhance empathy and confidence via emotional intelligence activities, and practice clear, compassionate communication to inspire others.

C

S

A

A

CPR/First Aid/AED [Youth 13+ and Adults] **February 21, 2026**



Location: Madison, WI
Price: \$40
Certification: Two-Year First Aid/CPR/AED for Adult/Child/Infant

This blended course combines pre-course online modules with an in-person session, awards a two-year certification, offers optional refresher courses, and covers CPR, first aid, Epi-Pen, and inhaler administration to meet Badgerland Girl Scouts and Wisconsin state requirements.

J

C

S

A

Aide to Lead [Grades 4 -12] February 28, 2026



Location: Madison, WI
Leadership Center
Badge/Patch: Aide Award
Price: \$25/Youth

Girl Scouts will join hands-on sessions to boost confidence and leadership skills, inspire younger Girl Scouts through courageous example, and discover their own unique style of leading.

March Highlight

Capitol
Day!



Girl Scout Day at the Capitol: Democracy [Grades K-12 & Adults] March 14, 2026

Location: Madison, WI

Badge/Patch: Girl Scout Day at the Capitol

Patch, Democracy Badge (per level)

Price: \$25/Youth, \$5/Adult

Girl Scouts will meet with local legislators, experts, and organizations to learn about civic engagement, explore the Wisconsin State Capitol's history and government, and earn their Democracy badge through a passport-style program.



Join Girl Scouts from all
over Wisconsin at our
State Capitol Building!



C
S
A

Illuminate Your Leadership: Torch Award **[Grades 6-12] March 21, 2026**



Location: Madison, WI
Badge/Patch: Torch Award
Price: \$25/Youth

Girl Scouts will pinpoint their strengths and values to lead authentically, gain tools for bold idea development and action planning, and hone active listening, clear communication, and teamwork skills to empower inclusive leadership.

D
B
J
C
S
A
A

Leading the Way: A Recognition of Girl Scout Achievement **[Grades K-12 & Adults] April 18, 2026**



Location: Prairie du Sac, WI
Badge/Patch: N/A
Price: Free

Girl Scouts will honor Bronze, Silver, and Gold Award recipients, celebrate graduating seniors as they embark beyond Girl Scouts, and unite in sisterhood to recognize leadership, service, and community impact.

Girl Scout Week **March 8-14**

Girl Scout Week is celebrated each March, beginning with Girl Scout Sunday and ending the following Saturday. It always includes Girl Scouts' birthday—March 12.

This special day commemorates the founding of Girl Scouts in 1912. Join us each day in celebrating our incredible worldwide sisterhood. Themed days will be shared leading up to Girl Scout Week.

April Highlight

STEM &
Outdoors!



Eco Experts [Grades K-12 & Adults] April 25, 2026

Location: Upham Woods Outdoor Learning Center

Badge/Patch: Eco Series

Price: \$25/Youth; Free for Adults

Girl Scouts will gain skills for outdoor adventures and wildlife protection, apply Leave No Trace to build eco-friendly campsites and plan sustainable meals, and explore environmental issues to advocate for nature and teach conservation.



Get Registered!



[Go to GS events](#)





- D
- B
- J
- C
- S
- A
- A

Outdoor Skills Fest-Spring Camporee [Grades K-12 & Adults] May 8-10, 2025



Location: Mindoro, WI
Badge/Patch: Outdoor Skills Patch
Price: \$150/Youth; \$125/Adult

Girl Scouts will enjoy spring outdoor adventures—hiking, scavenger hunts and fire-building—master camping skills in cooking, shelter building and knot tying, and stay two nights at Camp Ehawee.

- J
- C
- S
- A

True North Training [Grades 4-12] May 9, 2026

Location: Madison, WI
Badge: True North Award
Price: \$25/Youth

Girl Scouts will pinpoint their strengths and leadership style to build authentic confidence, learn to craft bold ideas and action plans that inspire teamwork, and practice active listening, clear communication, and collaboration to lead inclusively.

- D
- B
- J
- C
- S
- A

Strong from the Inside Out [Grades K-12] May 16, 2026



Location: Madison, WI
Badge/Patch: NEW!-Body Positivity (per level)
Price: \$25/Youth; Free for Adults

Girl Scouts will build confidence and body appreciation with hands-on activities, learn emotional well-being, boundary-setting, and self-care strategies, and support each other in creating a positive, inclusive environment.

- C
- S
- A
- A

CPR/First Aid/AED [Youth 13+ and Adults] May 17, 2026



Location: Madison, WI
Price: \$40
Certification: Two-Year First Aid/CPR/AED for Adult/Child/Infant

This blended course combines pre-course online modules with an in-person session, awards a two-year certification, offers optional refresher courses, and covers CPR, first aid, Epi-Pen, and inhaler administration to meet Badgerland Girl Scouts and Wisconsin state requirements.

Adult Only Programs



New Leader Orientation Virtual [Adult] September 24, 2025

Learn Girl Scouts' structure and troop leadership, safety & certification requirements, virtual tools for planning & resources, building a strong support network, and practical tips for organizing your troop's meetings.

New Leader Orientation, Madison [Adults] - October 15, 2025

Learn Girl Scouts' structure and troop leadership, safety & certification requirements, virtual tools for planning & resources, building a strong support network, and practical tips for organizing your troop's meetings.

New Leader Orientation, Virtual [Adults] - November 3, 2025

Learn how the Girl Scout organization and Badgerland Council operate, master safety certifications, leverage virtual planning tools and resources, build a strong volunteer support network, and gain practical tips for organizing your troop's meetings.

New Leader Orientation, Madison [Adults] - November 12, 2025

Learn Girl Scouts' structure and troop leadership, safety & certification requirements, virtual tools for planning & resources, building a strong support network, and practical tips for organizing your troop's meetings.

New Leader Orientation, Madison [Adults] - January 6, 2026

Learn Girl Scouts' structure and troop leadership, safety & certification requirements, virtual tools for planning & resources, building a strong support network, and practical tips for organizing your troop's meetings.

New Leader Orientation, Virtual [Adults] - January 7, 2026

Learn Girl Scouts' structure and troop leadership, safety & certification requirements, virtual tools for planning & resources, building a strong support network, and practical tips for organizing your troop's meetings.



Adult Only Programs



Campowerment: Mental Wellness [Adults] - January 30 - February 1, 2026

Location: Camp
Brandenburg
Price: \$75

Engage in expert-led mental wellness sessions (MESH, MRT, Youth MHFA, MBSR), opt into Friday night adult CPR/First Aid/AED certification, enjoy camp fun—games, crafts, outdoor cooking, hikes—and savor an adult-only weekend to connect and recharge.

Bella Vida [Adults] - May 2, 2025

Location: Madison
Leadership Center
Price: \$5

Attendees will relax with chair massages, unleash creativity in crafts, savor catered hors d'oeuvres & wine, refresh with mindfulness moments, enjoy light physical activities, snag swag bags, and delight in surprises!

New Leader Orientation, Madison [Adults] - May 12, 2026

Learn Girl Scouts' structure and troop leadership, safety & certification requirements, virtual tools for planning & resources, building a strong support network, and practical tips for organizing your troop's meetings.

New Leader Orientation, Virtual [Adults] - May 13, 2026

Learn Girl Scouts' structure and troop leadership, safety & certification requirements, virtual tools for planning & resources, building a strong support network, and practical tips for organizing your troop's meetings.



Updated Leadership Awards

The new Leadership Awards are about building real skills for real impact and having the confidence to turn your ideas into action. Whether you're figuring out what leadership means to you, working with a team, leading a group, or stepping up to a challenge, these awards are designed to help you explore what leadership means—no pressure, just room to grow. If you're in grades 4–12, you can earn these awards on your own, at events or camp, at troop meetings, or even in your community. They're flexible and designed to fit your interests and schedule. Plus, earning these awards is a fun, meaningful way to practice leadership and take on challenges that matter to you. And the cherry on top? **These awards serve as the updated prerequisites to earning Girl Scouts' Highest Awards: the Bronze, Silver, and Gold Awards.**

What Type of Leadership Can You Explore?



Personal Leadership:
Build courage and confidence.

Related Award



Related Council Event

True North Trainings



10/18



5/9

Peer Leadership:
Learn to lead and support a team.



Illuminate Your Leadership



1/24



3/21

Community Advocacy:
Make change on issues you care about.



Aide to Lead



11/1



2/28

Teaching leadership:
Inspire younger Girl Scouts.



Aide to Lead



11/1



2/28

Highest Awards

Ready to go for the Bronze, Silver, or Gold Award?

Leadership Awards (page 24) help build your confidence—and the bonus? They’re part of an expanded set of options to fulfill the prerequisite toward earning Girl Scouting’s Highest Awards.



Juniors earn the Bronze Award by teaming up with other Girl Scouts to make a difference in their communities.



Cadettes earn the Silver Award by researching an issue, making a plan to address it, and then taking action to improve their communities.



Seniors and Ambassadors earn the Gold Award —the highest award in Girl Scouting—by developing and carrying out lasting solutions to issues in their neighborhoods and beyond. Gold Award Girl Scouts truly are the world changers, rock stars, role models, and real-life heroes we all look up to. Plus, they’re amazing candidates for colleges, scholarships, competitive internship programs, and exciting careers.

Interested in earning your Highest Awards? Reach out to our team at HighestAwards@gsbadgerland.org

Explore more though our website



[Explore more](#)



Summer Spotlight

Get Excited for Summer!

Before we know it, Trimester 3 will be back—full of summer camp, programs, troop camping, and lots of adventure. Our next program launch will be for Trimester 3, the summertime, so watch your email (and your mailbox) for when that drops.



Day
Camp

Specialty
Camps

Troop
Travel

Resident
Camp



You're Going Places, Girl Scout!

Girl Scouts love to travel - from the field trips they take as Brownies to the global adventures they go on as teens. If you love exploring different places and cultures, then Girl Scouts is the place for you. Thinking about planning your own trip with your troop, family, or friends? Start now with these resources made just for you.

[Learn more
about travel:](#)



Let's Get Registered!

MyBadgerland

Your one-stop-shop for programs, information, and all things Badgerland Girl Scouts. Scan the QR code to explore events and get registered for your favorites!



Scan to explore
MyBadgerland

[Go to page](#)

GS Events

GS Events is the platform that our website will take you to in order to register for programs. Scan the QR code to the right to go straight there.



Scan to explore
GS Events

[Go to page](#)



Program Scholarships Available: Cost should never be a barrier to belonging. Scholarships are available for programs, membership, uniforms, and camp—so every Girl Scout can participate. Apply at: www.gsbadgerland.org/scholarships



Having trouble registering?

Our local Customer Care team is here to help by answering your questions or connecting you with the right staff member. Most inquiries receive a response within 1–2 business days.

You can contact Customer Care to ask questions, get support, find resources, register for events, share feedback, submit photos or stories, and more. Use the contact information below.

Badgerland Bucks

Using Badgerland Bucks/Program Credits for Event Registration

Badgerland Bucks (Program Credits) may be used to pay for event registration under the following conditions:

- **Pre-Earned Only:** Only Program Credits that have already been earned may be used. Credits from upcoming product sales are not eligible.
- **Family Authorization Required:** Program Credits may only be used with the approval of the Girl Scout and her family. For troop registrations, we may reach out directly to families to confirm authorization before applying any credits.
- **Payment Process:** When Program Credits are selected as a payment method, available credits will be applied. If the credits do not fully cover the event fee, the family or troop leader will be contacted to arrange alternative payment.
- **Expiration of Credits:** Program Credits expire on September 30 each year. They cannot be used for registration until new Badgerland Fall Fundraiser (BFF) or Cookie Sale Badgerland Bucks are distributed.
- **Response Required:** If you are contacted about your Badgerland Bucks (Program Credit) use or outstanding balance, you must respond within 5 business days.
- **Cancellation Policy:** If payment is not completed or no response is received within the stated timeframe, your event registration will be canceled. We reserve the right to cancel registrations if families are unresponsive to phone or email outreach.
- **Refunds and Transfers:** Program Credits expire on September 30. After this date, refunds for event registrations paid with Program Credits are not available, regardless of attendance. Transfers or participant substitutions are subject to the rules of the original transaction and cannot be guaranteed.

We appreciate your cooperation in ensuring fair and accurate use of Program Credits for all participants.



Other Program Options

Community Connections

Our Preferred Community Connections Partners have been vetted by Girl Scouts of Wisconsin - Badgerland and offer various badge and patch earning activities. These partners have met all Safety Activity Checkpoint requirements and have a Certificate of Insurance on file with Badgerland. This means you don't need additional approval from the Council for these partners!

Badge Instructional Resources

We have a variety of digital download resources for troop leaders to access to help guide badge earning meetings. Badge in a Booklets provide you with a variety of options for how to earn a specific badge. These booklets are multi-level; if you are looking for single level badge pamphlets, those can be found in Volunteer Toolkit in the instructions for each badge.

Additional Resources

At Badgerland, we have a variety of local resources you can use to help plan field trips, meetings, or events. From requesting an expert from council to exploring Badgerland Pathways—we've got you covered!

Monthly Patch Challenges

Monthly patch challenges are now anytime challenges! Complete the required items, and purchase the patch On Your Honor from Badgerland Sashay! shop or online at shopgsbadgerland.org.



[Go to page](#)



[Go to page](#)



[Go to page](#)



[Go to page](#)

Property Reservations

Reserve Your Perfect Girl Scout Space

Whether you're planning a cozy troop meeting at one of our leadership centers or an unforgettable campout at one of our beautiful camp properties, we've got the perfect space for you! Our properties are designed to help Girl Scouts explore, learn, and have fun—together.

Property reservations follow the same timeline as program registration.

- **View spaces starting August 5** to find the perfect fit for your troop or service unit event.
- **Reservations open at noon on August 19** so you can lock in your dates and start planning your adventure!

From indoor meeting rooms to outdoor campfire circles, every property is ready to help your Girl Scouts create memories that last a lifetime.



Innovation Lab



Madison Leadership Center



*Learn more about
our properties*

[Go to page](#)



*Checkout a
property for use*

[Go to page](#)



Camp Ehawee



Camp Brandenburg

We're Here to Help!

info@gsbadgerland.org | (800) 236-2710

Connect with Girl Scout Members or Volunteers

Rallyhood platform (both web and mobile phone app)

Website: rallyhood.com/224448/

Rallyhood is our go-to online space where Girl Scout families, volunteers, and council staff can connect, communicate, and collaborate. It provides us with a council-wide solution that brings all of our groups, troops, committees, and forums together on one platform to create a more consistent and efficient Girl Scout experience for all of us. Most inquiries are answered within 1-2 business days.

Scan or click



Rallyhood
welcome &
trainings

[Go to page](#)



Badgerland
all member hub

[Go to page](#)

General Questions or Support from Council

Our local Customer Care team is here to help by answering your questions or connecting you with the right staff member. Most inquiries receive a response within 1-2 business days.

You can contact Customer Care to ask questions, get support, find resources, register for events, share feedback, submit photos or stories, and more.



Locations
and hours

[Go to page](#)



My Badgerland
webpage

[Go to page](#)



www.gsbadgerland.org



info@gsbadgerland.org



shopgsbadgerland.org



[@gsbadgerland](https://www.instagram.com/gsbadgerland)



Let's have a great
Girl Scout year!

